

# TOBACCO INDUSTRY

## *KIO (Klemsan Internet Objects) Platform Case Studies*





**By the implementation of **KIO Platform**, a major player in tobacco industry is not only being protected from fire but also it is increasing efficiency !**

As one of the most important producers of tobacco industry, the company supports high quality tobacco production with its continuous investment philosophy.

The company's main goal while implementing KIO platform in its facilities was to monitor and minimize energy consumption and to set up a compensation monitoring system. In addition to these main benefits, thanks to KIO, they were able to detect a short circuit-related problem in the compensation board, replaced the defective product and eventually eliminated the risk of fire.



## AIM OF THE PROJECT

- ▶ To monitor the energy consumption values in real time for the purpose of taking precautions in advance.
- ▶ To keep track of the water meter instantly and continuously, during working time, downtime and holidays.
- ▶ To make an automatic compensation control instead of manual one.
- ▶ To observe the battery status of forklifts in charging stations.
- ▶ To continuously monitor ambient temperature and humidity for healthy storage conditions.

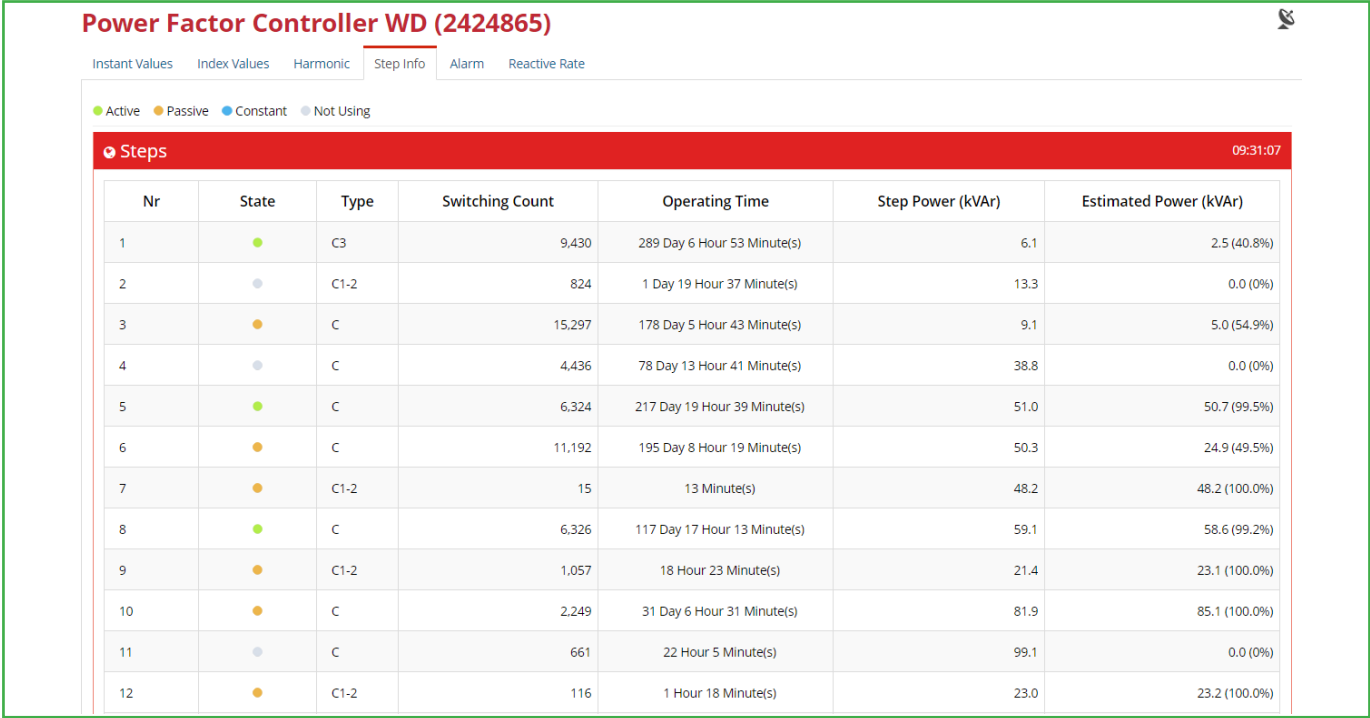
**Solution:** KIO Basic Module, Klemsan Rapidus Reactive Power Control Relay

### Benefits:

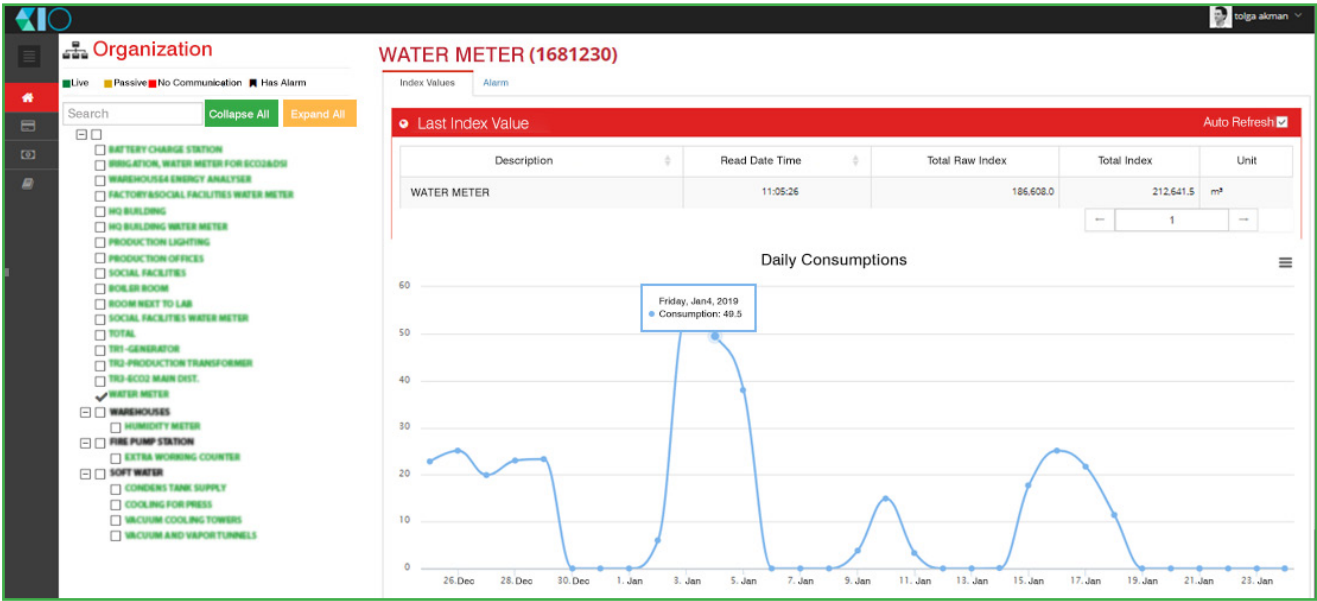
- ▶ The process of noting the indices on the papers by visiting the electricity meters one by one is eliminated. Hence, half-day labor savings were achieved. Besides, thanks to the mail and alarm warning system, interventions can be done quickly.
- ▶ Excess use of electricity and water is prevented on a large scale.
- ▶ With the help of Rapidus Reactive Power Control Relay, life of the capacitors are monitored. is used to monitor capacitor life. By following the number of switches for each step, the adhesion of contactors is prevented. Thus, KIO platform also provides support for preventive maintenance.



# KIO DASHBOARDS FOR THE TOBACCO COMPANY

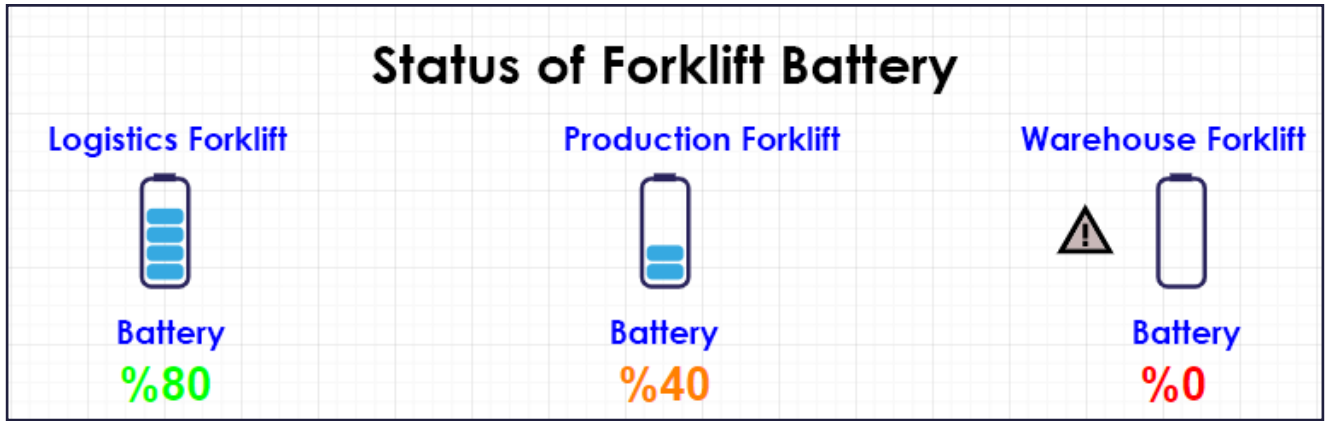


Instant consumption information received from water meters has prevented extraordinary consumption.





The scope of the project is to be expanded so that, with the help of KIO, the status of the batteries in the forklift charging stations will be monitored. The battery life will be extended and the efficiency will be increased with a longer-term use of forklifts.



**Visit our website for detailed info !**

Kızılızüm Mahallesi Kemalpaşa Kızılızüm Cad. No:15 - 35730  
Kemalpaşa - İzmir / TURKEY  
Tel: (+90 232) 877 08 00 - Fax: (+90 232) 877 08 06

**Klemsan®**